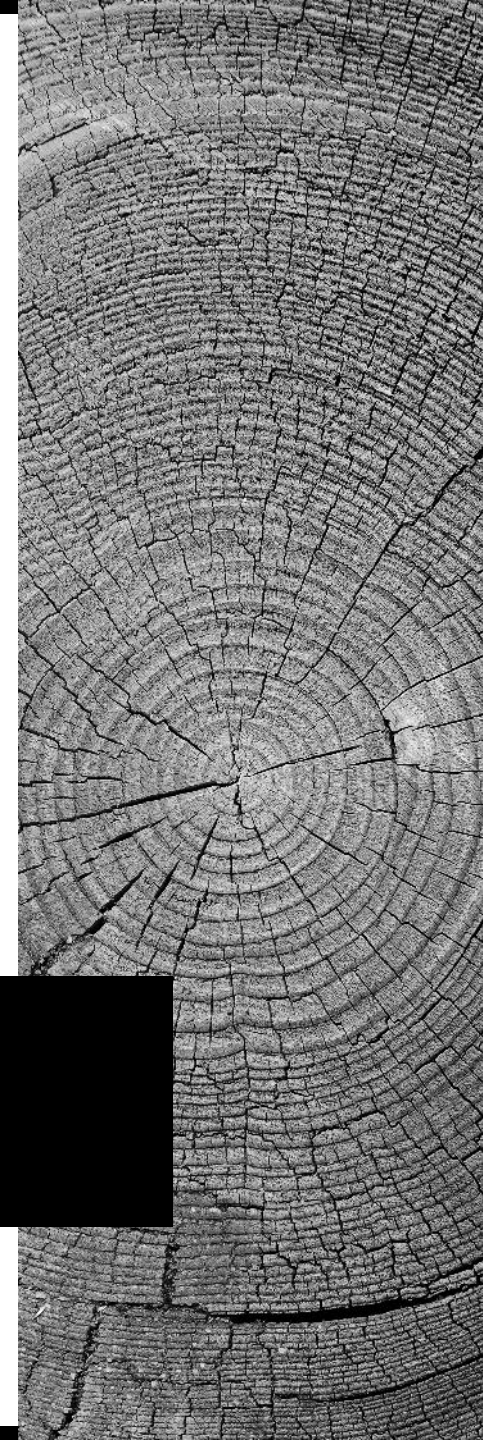


Centenary College Meeting
August 17, 2023

TITLE IX ESSENTIALS

Mark Miller

Title IX Coordinator



WHAT IS TITLE IX?

"No person in the United States shall, on the basis of sex, be excluded from participation in, be denied the benefits of, or be subjected to discrimination under any education program or activity receiving Federal financial assistance."

Centenary College prohibits domestic violence, dating violence, sexual assault, sexual harassment, and stalking.



DEFINITIONS

Sexual Harassment

Types of Harassment

Conduct on the basis of sex that satisfies one or more of the following:

- (1) An employee of the College conditioning the provision of an aid, benefit, or service of the College on an individual's participation in unwelcome sexual conduct;
- (2) Unwelcome conduct determined by a reasonable person to be so severe, pervasive, and objectively offensive that it effectively denies a person equal access to the College's education program or activity; or
- (3) "Sexual assault", "dating violence", "domestic violence", or "stalking"

Reporting

- Any person may report Sexual Discrimination or Harassment to the Title IX Coordinator verbally in person or via phone, or in writing via email or other means.
- Indirect reporting is also permissible through DPS, HR, Student Conduct, a supervisor, or other college officials.
- A formal complaint is not required to receive supportive measures and accommodations.

DEFINITIONS

Domestic/Dating/Partner Violence

Dating Violence

Violence committed by a person who is or has been in a social relationship of a romantic or intimate nature with the victim. The existence of such a relationship shall be determined based on the reporting party's statement and with consideration of the length of the relationship, the type of relationship, and the frequency of interaction between the persons involved in the relationship. "Dating violence" includes, but is not limited to, sexual or physical abuse or the threat of such abuse. "Dating violence" does not include acts covered under the definition of domestic violence. Any incident meeting this definition is considered a crime for the purposes of Clery Act reporting.

Domestic Violence

- A felony or misdemeanor crime of violence committed by: (a) a current or former spouse or intimate partner of the victim, (b) a person with whom the victim shares a child in common, (c) a person who is cohabitating with, or has cohabitated with, the victim as a spouse or intimate partner, (d) a person similarly situated to a spouse of the victim under the domestic or family violence laws of the jurisdiction in which the crime of violence occurred, or (e) any other person against an adult or youth victim who is protected from that person's acts under the domestic or family violence laws of the jurisdiction in which the crime of violence occurred.

DEFINITIONS

Stalking

Stalking

Engaging in a course of conduct directed at a specific person that would cause a reasonable person to (a) fear for the person's safety or the safety of others or (b) suffer substantial emotional distress. Course of conduct means two or more acts, including, but not limited to, acts in which the stalker directly, indirectly, or through third parties, by any action, method, device, or means, follows, monitors, observes, surveils, threatens, or communicates to or about a person, or interferes with a person's property.



DEFINITIONS

Sexual Assault

Rape

The penetration, no matter how slight, of the vagina or anus with any body part or object, or oral penetration by a sex organ of another person, without the consent of the victim.

Fondling

The touching of the private body parts of another person for the purpose of sexual gratification, without the consent of the victim, including instances where the victim is incapable of giving consent because of his/her age or because of his/her temporary or permanent mental incapacity.

Incest

Non-forcible sexual intercourse between persons who are related to each other within the degrees wherein marriage is prohibited by law.

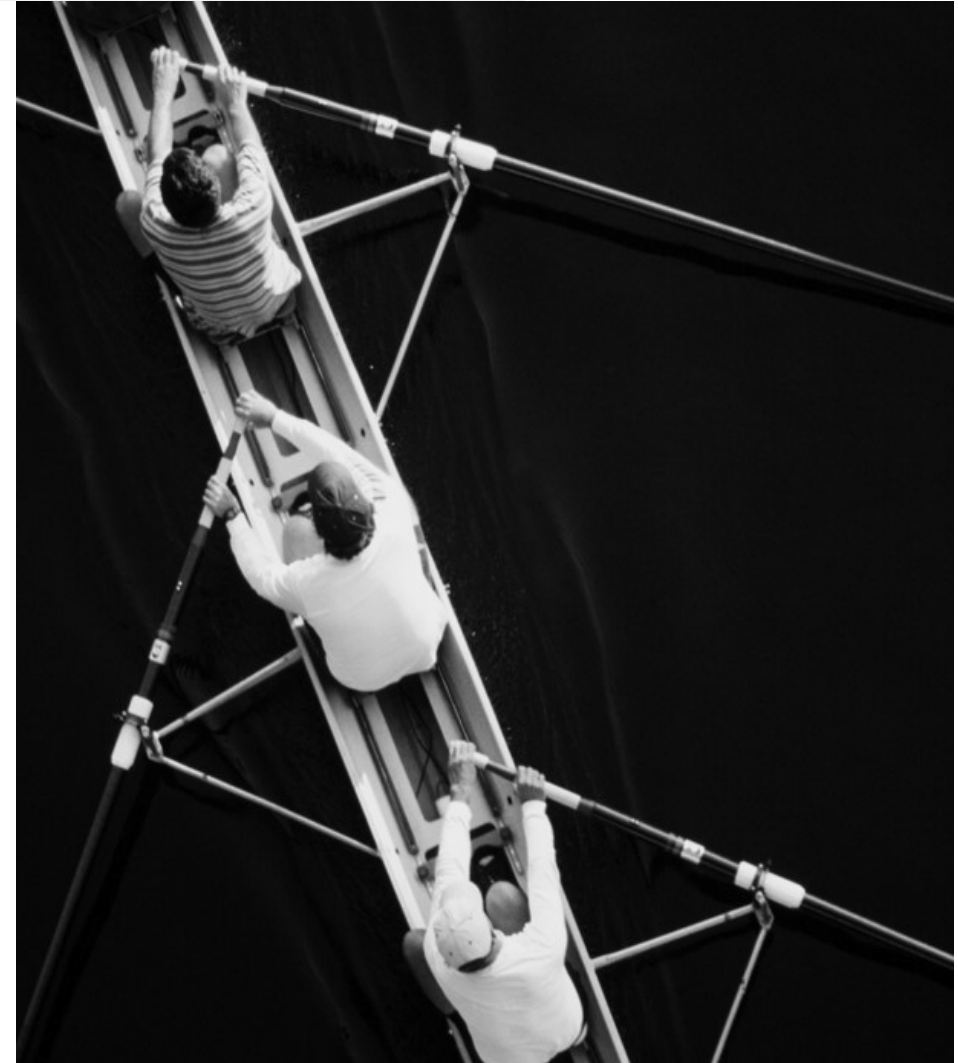
Statutory Rape

Non-forcible sexual intercourse with a person who is under the statutory age of consent (17 years old).

DEFINITIONS

Consent at Centenary College

Consent to engage in sexual activity must exist from beginning to end of each instance of sexual activity. Consent is demonstrated through mutually understandable words and/or actions that clearly indicate a willingness to engage in a specific sexual activity. Silence alone, without actions evidencing permission, does not demonstrate Consent. Consent must be knowing and voluntary. To give Consent, a person must be of legal age. Assent does not constitute Consent if obtained through Coercion or from an individual whom the Alleged Offender knows or reasonably should know is Incapacitated. The responsibility of obtaining Consent rests with the person initiating sexual activity. Use of alcohol or drugs does not diminish one's responsibility to obtain Consent. Consent to engage in sexual activity may be withdrawn by any person at any time. Once withdrawal of Consent has been expressed, the sexual activity must cease. Consent is automatically withdrawn by a person who is no longer capable of giving Consent. A current or previous consensual dating or sexual relationship between the Parties does not itself imply Consent or preclude a finding of responsibility.





WHAT DO I NEED TO KNOW?

*Warning signs for
college aged adults*

WARNING SIGNS

Many of these warning signs may have other causes, such as being away from home for the first time, but when in doubt it is better to ask how they are and to let them know you care. Affirm that you are ready to listen and believe them should they want to speak, and make referrals as needed.

Signs of Sexual Assault

- Signs of depression, such as persistent sadness, lack of energy, changes in sleep or appetite, withdrawing from normal activities, or feeling “down”
- Self-harming behaviors, thoughts of suicide, or suicidal behaviors
- Low self-esteem
- Anxiety or worry about situations that did not seem to cause anxiety in the past
- Avoiding specific situations or places
- Falling grades or withdrawing from classes
- Increase in drug or alcohol use

Abusive Relationships

- Withdrawing from other relationships or activities, for example, spending less time with friends, leaving sports teams, or dropping classes
- Saying that their partner doesn’t want them to engage in social activities or is limiting their contact with others
- Disclosing that sexual assault has happened before
- Any mention of a partner trying to limit their contraceptive options or refusing to use safer sexual practices, such as refusing to use condoms or not wanting them to use birth control
- Mentioning that their partner is pressuring them to do things that make them uncomfortable
- Signs that a partner controlling their means of communication, such as answering their phone or text messages or intruding into private conversations
- Visible signs of physical abuse, such as bruises or black eyes

WHAT DO I NEED TO DO?

*Report, Refer, and
serve as a Role Model*

REPORT, REFER, AND ROLE MODEL

Report – To a Title IX officer, student conduct, DPS, HR, or other appropriate person.

Refer – To Counseling Services, TimelyCare, Chaplain, Title IX office, or others who can help.

Role Model – Address inappropriate behavior. Encourage and model bystander intervention.

Active Bystander Intervention

- Create a distraction.
- Ask directly if someone needs assistance.
- Rally others.
- Extend support and offer resources.

Source: rain.org

THANK YOU

Mark Miller

📞 +1 318 869 5023

✉️ mmiller@centenary.edu

🔗 [Centenary.edu/handbook](https://centenary.edu/handbook)